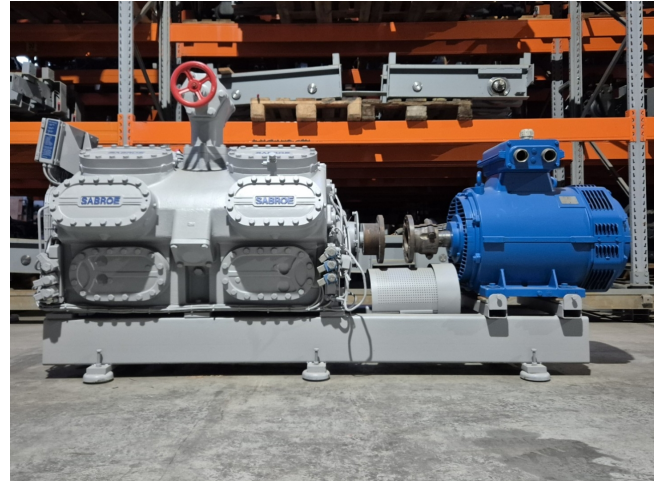


# Sabroe SMC 116 S LP (Overhauled)

## Specifications

Marque	Sabroe
Le type	SMC 116 S LP (Overhauled)
Réfrigérant	Freon
kW at -30°C/+40°C	155,7
kW at -40°C/+40°C	71,0
kW at -45°C/+40°C	41,5
Électromoteur Specs	50/60 Hz - 90/103 kW - 1470/1770 RPM
Démarrage à vide	✓
Contrôle de capacité	✓
Sur le châssis en acier	✓
Voyant	✓
Electrovanne	✓
Panneau de configuration	✓
m3 / h	882
Tailles	2680x1000x1370 mm (LxWxH)
Stock	1



## Description

### Used Sabroe SMC 116 S LP (Overhauled)

Overhauled Sabroe SMC 116 S LP reciprocating compressor on Freon. Complete with a Schorch KN7250M-BB014-152 electric motor - 50/60 Hz - 90/103 kW - 1470/1770 RPM and an Unisab RT-Control. The compressor has a displacement of 882 m<sup>3</sup>/h at 1460 RPM.

\*Why choose for HOSBV? Were not only the largest used refrigeration specialist in Europe, but also, we deliver all equipment including an extensive test, warranty and industrial cleaning.

\*Optional we can also perform a new paint job and arrange the logistics.

